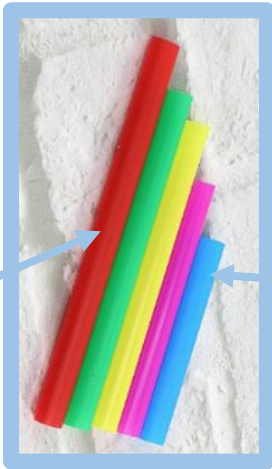


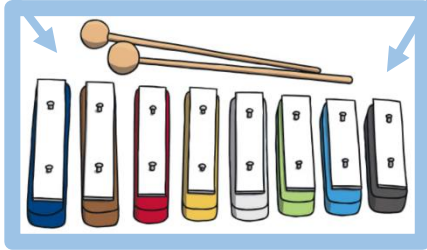
# Sound (Y4)

## Big Ws: Pitch



Longer =  
lower pitch

Shorter =  
higher pitch



## Big Ws: Volume

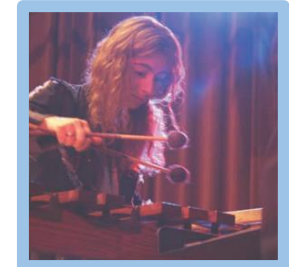
Greater force =  
louder the volume



Less force =  
quieter the volume

## Important People

**Evelyn Glennie**  
(1965-present)



- Deaf musician.
- Plays **percussion** instruments.

SCAN ME



## Vocabulary

medium	pitch	sound	vibration	volume
Something <b>sound</b> energy travels through.	How <b>high or low</b> a sound is.	<b>Energy</b> made by an <b>object vibrating</b> .	<b>Quickly</b> moving <b>back and forth</b> .	How <b>loud or quiet</b> a sound is.

## Big Ws: Measuring sound



- Sound is measured in **decibels**.
- What **medium** sound travels through affects **how well** we can hear it.